

■ 장비일람표 ■

SAMSUNG

■ 전체

용량 가변형(VRF) 실내기

장비번호	수량	형식	모델	냉방 용량		난방 용량		팬 형식	기외 정압 (Pa)	냉매	배관			제품 치수 (WxHxD)		제품 중량 (kg)	전기 특성						비 고	
				(kW)	(kcal/h)	(kW)	(kcal/h)				역관 (mm)	가스관 (mm)	드레인 (mm)	본체 (mm)	판넬 (mm)		운전 전류 (A)	소비 전력 (kW)		통선선 (mm ²)	전원선 (mm ²)	전원 (Ø#,V,Hz)		
032	4	무풍 1Way	AM032BN1PBH1	3.20	2750	3.60	3100	Crossflow Fan	-	R410A	6.35	12.7	VP20	970x135x410	-	10.00	0.13	0.13	0.026	0.026	0.75 (IV)	2.5 (CV)	1 2 220 60	-
040	2	무풍 1Way	AM040BN1PBH1	4.00	3440	4.50	3870	Crossflow Fan	-	R410A	6.35	12.7	VP20	970x135x410	-	10.00	0.18	0.19	0.035	0.037	0.75 (IV)	2.5 (CV)	1 2 220 60	-
052	2	2Way	AM052CN2DBH1	5.20	4470	6.00	5160	Crossflow	-	R410A	6.35	12.7	VP25	890x230x575	-	19.00	0.28	0.28	0.034	0.034	0.75 (IV)	2.5 (CV)	1 2 220 60	-
060	12	2Way	AM060CN2DBH1	6.00	5160	6.80	5850	Crossflow	-	R410A	6.35	12.7	VP25	890x230x575	-	20.00	0.32	0.32	0.040	0.040	0.75 (IV)	2.5 (CV)	1 2 220 60	-
072	4	2Way	AM072CN2DBH1	7.20	6190	8.10	6960	Crossflow	-	R410A	6.35	12.7	VP25	890x230x575	-	20.00	0.32	0.32	0.040	0.040	0.75 (IV)	2.5 (CV)	1 2 220 60	-
052	1	무풍 4Way	AM052BN4DBH1	5.20	4470	6.00	5160	Turbo Fan	-	R410A	6.35	12.7	VP25	840x204x840	-	15.00	0.23	0.23	0.034	0.034	0.75 (IV)	2.5 (CV)	1 2 220 60	-
060	1	무풍 4Way	AM060BN4DBH1	6.00	5160	6.80	5850	Turbo Fan	-	R410A	6.35	12.7	VP25	840x204x840	-	15.00	0.23	0.23	0.034	0.034	0.75 (IV)	2.5 (CV)	1 2 220 60	-
072	3	무풍 4Way	AM072BN4DBH1	7.20	6190	8.10	6960	Turbo Fan	-	R410A	9.52	15.88	VP25	840x204x840	-	15.00	0.29	0.29	0.042	0.042	0.75 (IV)	2.5 (CV)	1 2 220 60	-
083	15	무풍 4Way	AM083BN4DBH1	8.30	7140	9.30	8000	Turbo Fan	-	R410A	9.52	15.88	VP25	840x204x840	-	15.00	0.37	0.37	0.050	0.050	0.75 (IV)	2.5 (CV)	1 2 220 60	-
100	4	무풍 4Way	AM100BN4DBH1	10.00	8600	11.00	9460	Turbo Fan	-	R410A	9.52	15.88	VP25	840x204x840	-	15.00	0.50	0.50	0.073	0.073	0.75 (IV)	2.5 (CV)	1 2 220 60	-
110	16	무풍 4Way	AM110BN4DBH1	11.00	9460	12.80	11010	Turbo Fan	-	R410A	9.52	15.88	VP25	840x246x840	-	17.00	0.58	0.58	0.082	0.082	0.75 (IV)	2.5 (CV)	1 2 220 60	-
130	4	무풍 4Way	AM130BN4DBH1	13.00	11180	14.50	12470	Turbo Fan	-	R410A	9.52	15.88	VP25	840x288x840	-	19.00	0.54	0.54	0.077	0.077	0.75 (IV)	2.5 (CV)	1 2 220 60	-

■ 전체

용량 가변형(VRF) 실외기

장비번호	수량	형식	모델	냉방 용량		난방 용량		압축기 형식	출력 (kW)	팬 형식	풍량 (CMH)	냉매	냉매 배관			제품 치수 (WxHxD)	제품 중량 (kg)	운전 전류 (A)	전기 특성						비 고				
				(kW)	(kcal/h)	(kW)	(kcal/h)						역관 (mm)	가스관 (mm)	고압가스관 (mm)				정격 소비 전력 (kW)	통합 소비 전력 (kW)			차단기 (A)	통선선 (mm ²)		전원선 (mm ²)	전원 (Ø#,V,Hz)		
010	1	DVM S2 냉난방	AM100AXVHHH1	29.00	24900	32.60	28000	SSC Scroll	6.67	Propeller	9420.0	R410A	9.52	19.05	-	930x1695x765	196.00	9.00	8.100	8.000	15.000	1.220	11.360	-	30.00	0.75 (IV)	4 (CV)	3 4 380 60	-
160	1	DVM S2 냉난방	AM160AXVHHH1	46.40	39900	52.20	44880	SSC Scrollx2	4.39x2	Propeller	16920.0	R410A	12.7	28.58	-	1295x1695x765	268.00	23.50	14.700	13.700	23.900	2.240	18.720	-	50.00	0.75 (IV)	10 (CV)	3 4 380 60	-
200	1	DVM S2 냉난방	AM180AXVHHH1	52.20	44880	59.10	50820	SSC Scrollx2	6.67x2	Propeller	18120.0	R410A	15.88	28.58	-	1295x1695x765	295.00	31.20	19.500	16.900	28.400	2.610	22.410	-	50.00	0.75 (IV)	10 (CV)	3 4 380 60	-
220	1	DVM S2 냉난방	AM220AXVHHH1	63.80	54860	71.80	61740	SSC Scrollx2	6.67x2	Propeller	21840.0	R410A	15.88	28.58	-	1860x1695x765	365.00	35.20	22.000	19.000	29.000	3.080	23.690	-	60.00	0.75 (IV)	16 (CV)	3 4 380 60	-
240	1	DVM S2 냉난방	AM240AXVHHH1	69.60	59850	78.40	67410	SSC Scrollx2	6.67x2	Propeller	21840.0	R410A	15.88	34.92	-	1860x1695x765	365.00	40.20	25.100	22.100	37.800	4.070	28.390	-	75.00	0.75 (IV)	16 (CV)	3 4 380 60	-
300	1	DVM S2 냉난방	AM340AXVHHH1SY	97.60	83920	108.70	93470	SSC Scrollx4	4.39x2 6.67x2	Propeller	16860.0 19800.0	R410A	19.05	34.92	-	(1295x1695x765)x2	268.00 305.00	59.50	37.200	29.200	51.800	4.730	40.550	-	100.00	0.75 (IV)	25 (CV)	3 4 380 60	-
360	1	DVM S2 냉난방	AM360AXVHHH1SY	104.40	89770	118.20	101630	SSC Scrollx4	6.67x4	Propeller	18120.0x2 10380.0 11220.0 19800.0	R410A	19.05	41.28	-	(1295x1695x765)x2 (930x1695x765)x2 1295x1695x765	295.00x2 196.00 198.00 305.00	62.40	39.000	33.800	56.800	5.220	44.820	-	100.00	0.75 (IV)	25 (CV)	3 4 380 60	-
420	1	DVM S2 냉난방	AM420AXVHHH1SY	120.80	103870	134.80	115910	SSC Scrollx4	6.67x4	Propeller	18120.0x2 10380.0 11220.0 19800.0	R410A	19.05	41.28	-	(930x1695x765)x2 1295x1695x765	196.00 198.00 305.00	72.10	45.000	37.000	59.900	5.820	49.370	-	125.00	0.75 (IV)	35 (CV)	3 4 380 60	-

NOTE

PROJECT TITLE

동국대

DRAWN

CHECKED

APPROVED

DRAWING TITLE

장비일람표

DRAWING NO.

DATE

SCALE

SHEET NO.

REV. NO.

7,500	10,500	6,600	6,600	6,600	6,600	6,000	4,330
3,000	7,500						



5,600

57,000

50,400

7,500

3,000

10,500

7,500

6,600

6,600

6,600

6,600

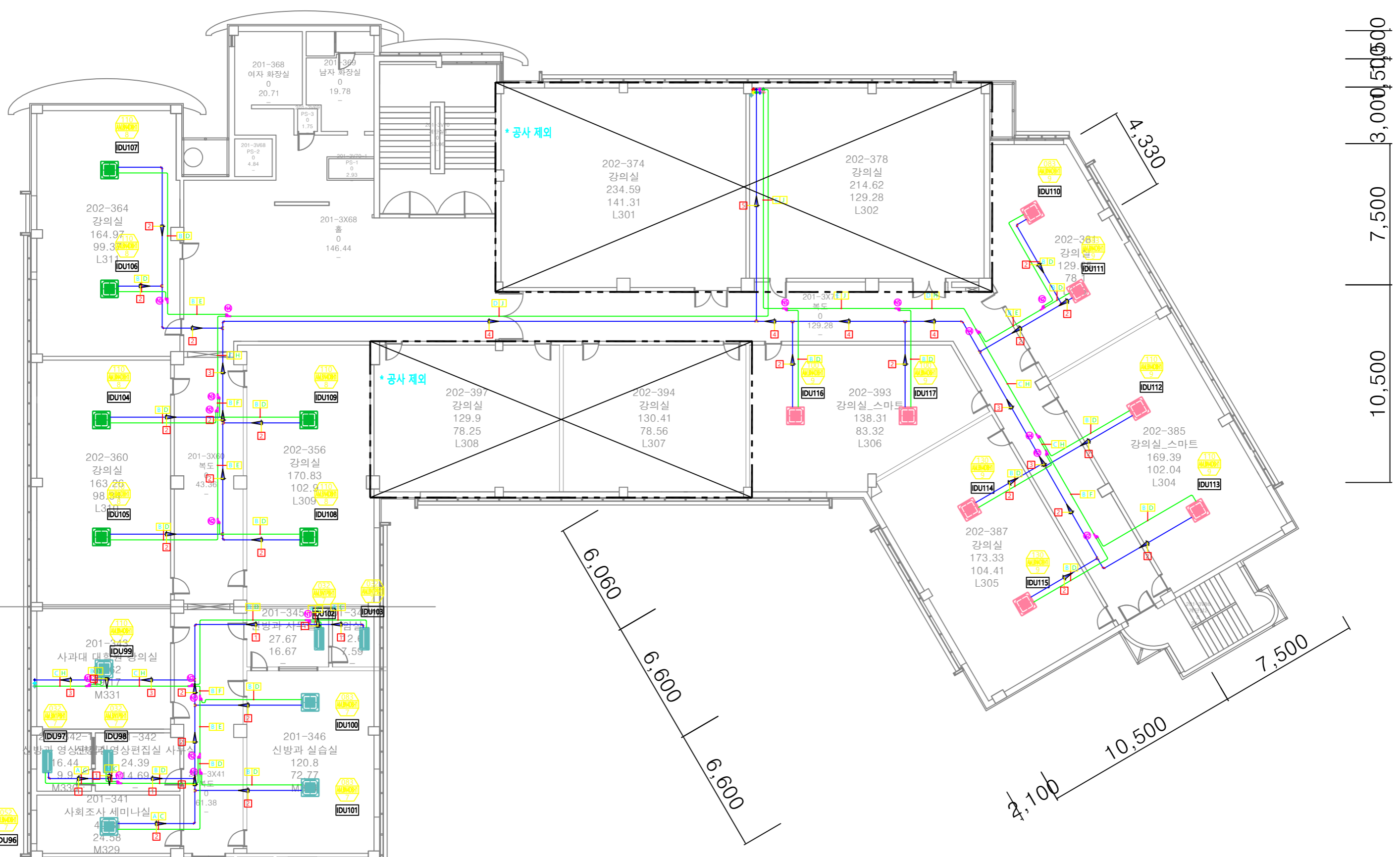
6,600

6,600

6,000

6,000

4,330



3,000

7,500

10,500

6,060

6,600

6,600

4,100

10,500

7,500

