

동국대학교 충무로영상센터 본관 8~9층 냉난방공사

2022-10-17

■ Equipment list ■

■ Equipment list(All)

| Category | Model | Qty | Description | Unit Price () | Amount () |
|----------|----------------|-----|-----------------------|---------------|-----------|
| ODU | AM160NXVHHH1 | 1 | DVM S (고효율 한랭지형), 냉난방 | | |
| | AM340NXVHHH1SY | 1 | DVM S (고효율 한랭지형), 냉난방 | | |
| IDU | AM032MN1PBH1 | 5 | 카세트, 무풍 1Way | | |
| | AM040MN1PBH1 | 9 | 카세트, 무풍 1Way | | |
| | AM052MN1PBH1 | 2 | 카세트, 무풍 1Way | | |
| | AM052NN4DBH1 | 1 | 카세트, 무풍 4Way | | |
| | AM060NN4DBH1 | 2 | 카세트, 무풍 4Way | | |
| | AM072NN4DBH1 | 5 | 카세트, 무풍 4Way | | |
| | AM110NN4DBH1 | 1 | 카세트, 무풍 4Way | | |
| | AM130NN4DBH1 | 1 | 카세트, 무풍 4Way | | |

SAMSUNG

NOTE

PROJECT TITLE

충무로영상센터

DRAWN

CHECKED

APPROVED

DRAWING TITLE

Equipment list

DRAWING NO.

DATE

SCALE

SHEET NO.

REV. NO.

■ Equipment Schedule ■

SAMSUNG

VARIABLE REFRIGERANT FLOW (VRF) SPLIT DX SYSTEM OUTDOOR UNIT

| DESIGNATION | MODEL NO. | REFRIGERANT | NOMINAL CAPACITY | | COMPRESSOR | | FAN | | | ELECTRICAL | | | | | | | WEIGHT | DIMENSIONS (W×H×D) | REFRIGERANT LINE SIZE | | | NOTES | |
|-------------|----------------|-------------|------------------|-----------------|--------------|----------------|-----------|---------------|-------------------|-----------------------------|------------|----------------|---|--|------------------|---------|--------|-----------------------|-----------------------|-----------------|-------------------|-------|-----------|
| | | | COOLING (kW) | HEATING (kW) | TYPE | OUTPUT (kW) | TYPE | OUTPUT (W) | AIR FLOW (CMM) | VOLTAGE (Phase / V / Hz) | Max (A) | Breaker (A) | Power Source Wire (mm ²) | Transmission Cable (mm ²) | POWER INPUT (kW) | | | | LIQUID (mm) | SUCTION (mm) | DISCHARGE (mm) | | |
| | | | | | | | | | | | | | | | COOLING | HEATING | | | | | | | CONDITION |
| System1 | AM340NXVHHH1SY | R410A | 97.60 | 108.70 | SSC Scrollx2 | 5.18 6.39 | Propeller | 620x2 | 255 290 | 3 / 380 / 60 | 74.50 | 100.00 | 25 | 0.75 | 27.90 | 21.84 | 48.80 | 305.00 325.00 | (1295x1695x765)x2 | 19.05 | 34.92 | - | - |
| System2 | AM160NXVHHH1 | R410A | 46.40 | 52.20 | SSC Scroll | 5.18 | Propeller | 620 | 270 | 3 / 380 / 60 | 38.40 | 50.00 | 10 | 0.75 | 13.90 | 13.50 | 25.50 | 305.00 | 1295x1695x765 | 12.7 | 28.58 | - | - |

VARIABLE REFRIGERANT FLOW (VRF) SPLIT DX SYSTEM INDOOR UNIT

| DESIGNATION | MODEL NO. | REFRIGERANT | NOMINAL CAPACITY | | FAN | | | | EXT. S. P. RANGE (Pa) | ELECTRICAL | | | | | | | | WEIGHT (kg) | DIMENSIONS | | REFRIGERANT LINE SIZE | | DRAIN | NOTES |
|-------------|--------------|-------------|------------------|-----------------|-----------|---------------|--------------|--------------|-----------------------------|-----------------------------|--|---|---------------|----------------|----------------|-----------------|----------------------------|----------------|--------------------------|----------------|-----------------------|-----------------|--------------------|-------|
| | | | COOLING (kW) | HEATING (kW) | TYPE | OUTPUT (W) | AIR FLOW | | | VOLTAGE (Phase / V / Hz) | Power Source Wire (mm ²) | Transmission Cable (mm ²) | CURRENT INPUT | | POWER INPUT | | PRODUCT (W×H×D) (mm) | | PANEL (W×H×D) (mm) | LIQUID (mm) | SUCTION (mm) | | | |
| | | | | | | | LOW (CMM) | MED (CMM) | | | | | HIGH (CMM) | COOLING (A) | HEATING (A) | COOLING (kW) | | | | | | HEATING (kW) | | |
| IDU1 | AM032MN1PBH1 | R410A | 3.20 | 3.60 | Crossflow | 27 | 5 | 6 | 7 | - | 1 / 220 / 60 | - | 0.75 | 0.13 | 0.13 | 0.03 | 0.03 | 10 | 970x135x410 | - | 6.35 | 12.7 | VP20 (OD 25,ID 20) | - |
| IDU2 | AM040MN1PBH1 | R410A | 4.00 | 4.50 | Crossflow | 27 | 6 | 7 | 8 | - | 1 / 220 / 60 | - | 0.75 | 0.18 | 0.19 | 0.04 | 0.04 | 10 | 970x135x410 | - | 6.35 | 12.7 | VP20 (OD 25,ID 20) | - |
| IDU3 | AM040MN1PBH1 | R410A | 4.00 | 4.50 | Crossflow | 27 | 6 | 7 | 8 | - | 1 / 220 / 60 | - | 0.75 | 0.18 | 0.19 | 0.04 | 0.04 | 10 | 970x135x410 | - | 6.35 | 12.7 | VP20 (OD 25,ID 20) | - |
| IDU4 | AM052MN1PBH1 | R410A | 5.20 | 6.00 | Crossflow | 54 | 10 | 11 | 12 | - | 1 / 220 / 60 | - | 0.75 | 0.30 | 0.30 | 0.06 | 0.06 | 14 | 1200x138x450 | - | 6.35 | 12.7 | VP25 (OD 32,ID 25) | - |
| IDU5 | AM040MN1PBH1 | R410A | 4.00 | 4.50 | Crossflow | 27 | 6 | 7 | 8 | - | 1 / 220 / 60 | - | 0.75 | 0.18 | 0.19 | 0.04 | 0.04 | 10 | 970x135x410 | - | 6.35 | 12.7 | VP20 (OD 25,ID 20) | - |
| IDU6 | AM040MN1PBH1 | R410A | 4.00 | 4.50 | Crossflow | 27 | 6 | 7 | 8 | - | 1 / 220 / 60 | - | 0.75 | 0.18 | 0.19 | 0.04 | 0.04 | 10 | 970x135x410 | - | 6.35 | 12.7 | VP20 (OD 25,ID 20) | - |
| IDU7 | AM032MN1PBH1 | R410A | 3.20 | 3.60 | Crossflow | 27 | 5 | 6 | 7 | - | 1 / 220 / 60 | - | 0.75 | 0.13 | 0.13 | 0.03 | 0.03 | 10 | 970x135x410 | - | 6.35 | 12.7 | VP20 (OD 25,ID 20) | - |
| IDU17 | AM072NN4DBH1 | R410A | 7.20 | 8.10 | Turbo | 65 | 14 | 16 | 18 | - | 1 / 220 / 60 | - | 0.75 | 0.29 | 0.29 | 0.04 | 0.04 | 15 | 840x204x840 | - | 9.52 | 15.88 | VP25 (OD 32,ID 25) | - |
| IDU18 | AM072NN4DBH1 | R410A | 7.20 | 8.10 | Turbo | 65 | 14 | 16 | 18 | - | 1 / 220 / 60 | - | 0.75 | 0.29 | 0.29 | 0.04 | 0.04 | 15 | 840x204x840 | - | 9.52 | 15.88 | VP25 (OD 32,ID 25) | - |
| IDU19 | AM052NN4DBH1 | R410A | 5.20 | 6.00 | Turbo | 65 | 12 | 14 | 16 | - | 1 / 220 / 60 | - | 0.75 | 0.23 | 0.23 | 0.03 | 0.03 | 15 | 840x204x840 | - | 6.35 | 12.7 | VP25 (OD 32,ID 25) | - |
| IDU20 | AM130NN4DBH1 | R410A | 13.00 | 14.50 | Turbo | 97 | 22 | 25 | 27 | - | 1 / 220 / 60 | - | 0.75 | 0.54 | 0.54 | 0.08 | 0.08 | 19 | 840x288x840 | - | 9.52 | 15.88 | VP25 (OD 32,ID 25) | - |
| IDU21 | AM060NN4DBH1 | R410A | 6.00 | 6.80 | Turbo | 65 | 13 | 16 | 17 | - | 1 / 220 / 60 | - | 0.75 | 0.23 | 0.23 | 0.03 | 0.03 | 15 | 840x204x840 | - | 6.35 | 12.7 | VP25 (OD 32,ID 25) | - |
| IDU22 | AM072NN4DBH1 | R410A | 7.20 | 8.10 | Turbo | 65 | 14 | 16 | 18 | - | 1 / 220 / 60 | - | 0.75 | 0.29 | 0.29 | 0.04 | 0.04 | 15 | 840x204x840 | - | 9.52 | 15.88 | VP25 (OD 32,ID 25) | - |
| IDU23 | AM032MN1PBH1 | R410A | 3.20 | 3.60 | Crossflow | 27 | 5 | 6 | 7 | - | 1 / 220 / 60 | - | 0.75 | 0.13 | 0.13 | 0.03 | 0.03 | 10 | 970x135x410 | - | 6.35 | 12.7 | VP20 (OD 25,ID 20) | - |
| IDU24 | AM060NN4DBH1 | R410A | 6.00 | 6.80 | Turbo | 65 | 13 | 16 | 17 | - | 1 / 220 / 60 | - | 0.75 | 0.23 | 0.23 | 0.03 | 0.03 | 15 | 840x204x840 | - | 6.35 | 12.7 | VP25 (OD 32,ID 25) | - |
| IDU25 | AM110NN4DBH1 | R410A | 11.00 | 12.80 | Turbo | 65 | 20 | 22 | 24 | - | 1 / 220 / 60 | - | 0.75 | 0.58 | 0.58 | 0.08 | 0.08 | 17 | 840x246x840 | - | 9.52 | 15.88 | VP25 (OD 32,ID 25) | - |
| IDU16 | AM072NN4DBH1 | R410A | 7.20 | 8.10 | Turbo | 65 | 14 | 16 | 18 | - | 1 / 220 / 60 | - | 0.75 | 0.29 | 0.29 | 0.04 | 0.04 | 15 | 840x204x840 | - | 9.52 | 15.88 | VP25 (OD 32,ID 25) | - |
| IDU15 | AM040MN1PBH1 | R410A | 4.00 | 4.50 | Crossflow | 27 | 6 | 7 | 8 | - | 1 / 220 / 60 | - | 0.75 | 0.18 | 0.19 | 0.04 | 0.04 | 10 | 970x135x410 | - | 6.35 | 12.7 | VP20 (OD 25,ID 20) | - |
| IDU14 | AM040MN1PBH1 | R410A | 4.00 | 4.50 | Crossflow | 27 | 6 | 7 | 8 | - | 1 / 220 / 60 | - | 0.75 | 0.18 | 0.19 | 0.04 | 0.04 | 10 | 970x135x410 | - | 6.35 | 12.7 | VP20 (OD 25,ID 20) | - |
| IDU13 | AM040MN1PBH1 | R410A | 4.00 | 4.50 | Crossflow | 27 | 6 | 7 | 8 | - | 1 / 220 / 60 | - | 0.75 | 0.18 | 0.19 | 0.04 | 0.04 | 10 | 970x135x410 | - | 6.35 | 12.7 | VP20 (OD 25,ID 20) | - |
| IDU12 | AM040MN1PBH1 | R410A | 4.00 | 4.50 | Crossflow | 27 | 6 | 7 | 8 | - | 1 / 220 / 60 | - | 0.75 | 0.18 | 0.19 | 0.04 | 0.04 | 10 | 970x135x410 | - | 6.35 | 12.7 | VP20 (OD 25,ID 20) | - |
| IDU11 | AM040MN1PBH1 | R410A | 4.00 | 4.50 | Crossflow | 27 | 6 | 7 | 8 | - | 1 / 220 / 60 | - | 0.75 | 0.18 | 0.19 | 0.04 | 0.04 | 10 | 970x135x410 | - | 6.35 | 12.7 | VP20 (OD 25,ID 20) | - |
| IDU10 | AM032MN1PBH1 | R410A | 3.20 | 3.60 | Crossflow | 27 | 5 | 6 | 7 | - | 1 / 220 / 60 | - | 0.75 | 0.13 | 0.13 | 0.03 | 0.03 | 10 | 970x135x410 | - | 6.35 | 12.7 | VP20 (OD 25,ID 20) | - |
| IDU9 | AM052MN1PBH1 | R410A | 5.20 | 6.00 | Crossflow | 54 | 10 | 11 | 12 | - | 1 / 220 / 60 | - | 0.75 | 0.30 | 0.30 | 0.06 | 0.06 | 14 | 1200x138x450 | - | 6.35 | 12.7 | VP25 (OD 32,ID 25) | - |
| IDU8 | AM032MN1PBH1 | R410A | 3.20 | 3.60 | Crossflow | 27 | 5 | 6 | 7 | - | 1 / 220 / 60 | - | 0.75 | 0.13 | 0.13 | 0.03 | 0.03 | 10 | 970x135x410 | - | 6.35 | 12.7 | VP20 (OD 25,ID 20) | - |
| IDU26 | AM072NN4DBH1 | R410A | 7.20 | 8.10 | Turbo | 65 | 14 | 16 | 18 | - | 1 / 220 / 60 | - | 0.75 | 0.29 | 0.29 | 0.04 | 0.04 | 15 | 840x204x840 | - | 9.52 | 15.88 | VP25 (OD 32,ID 25) | - |

NOTE

PROJECT TITLE

충무로영상센터

DRAWN

CHECKED

APPROVED

DRAWING TITLE

Equipment Schedule

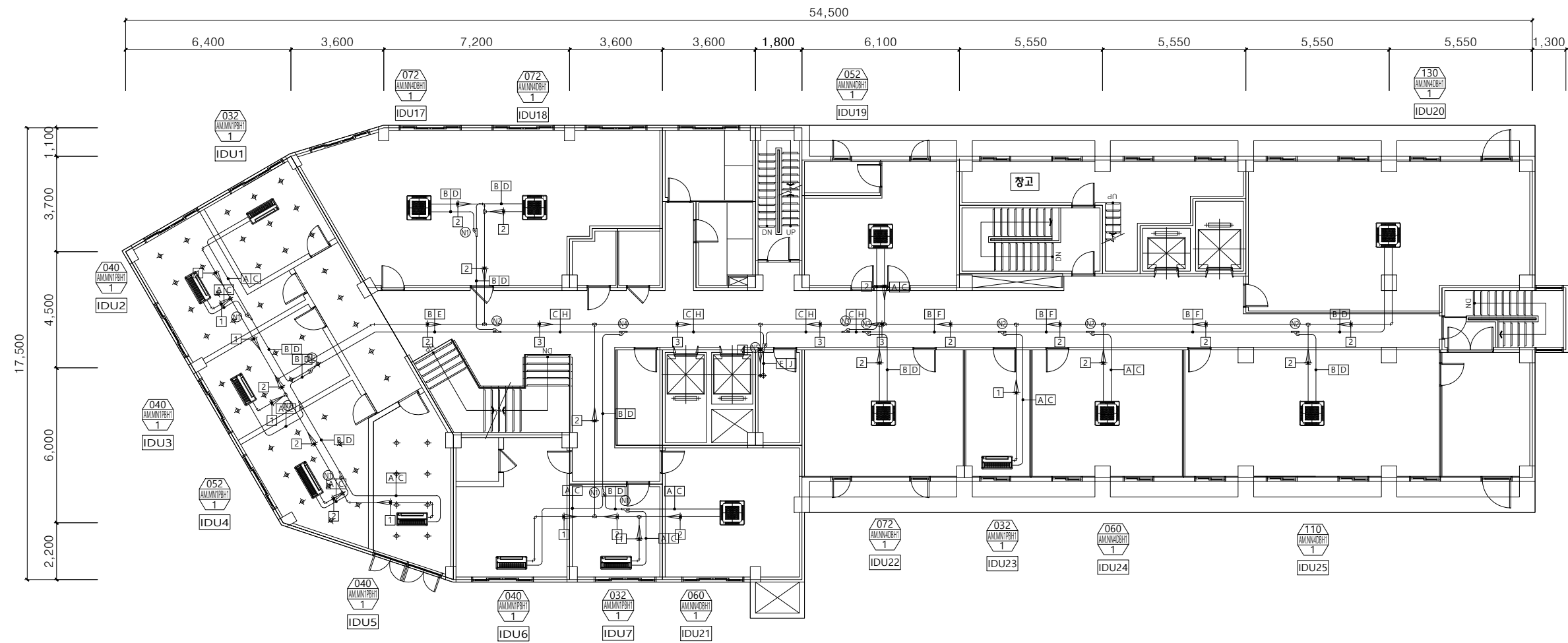
DRAWING NO.

DATE

SCALE

SHEET NO.

REV. NO.



| Symbol | Refrigerant Pipe Dia | Symbol | Drain Pipe Dia | Symbol | Model Code | Quantity |
|--------|----------------------|--------|----------------|--------|-------------|----------|
| A | ø6.35 | 1 | ø20 | ① | AXI-YA1509M | 6 |
| B | ø9.52 | 2 | ø25 | ② | AXI-YA2512M | 6 |
| C | ø12.70 | 3 | ø30 | ③ | AXI-YA2812M | 1 |
| D | ø15.88 | 4 | ø40 | ④ | AXI-YA2815M | 1 |
| E | ø19.05 | | | ⑤ | AXI-YA3419M | 1 |
| F | ø22.22 | | | | | |
| H | ø28.58 | | | | | |
| J | ø34.92 | | | | | |

| Sym | Name | Type | Note |
|-----|--------------------|-------------|------|
| RG | Low Pressure Pipe | Copper Pipe | |
| RL | Refrigerant Pipe | Copper Pipe | |
| RHG | High Pressure Pipe | Copper Pipe | |
| D | Drain Pipe | PVC Pipe | |

총무로 영상센터 지상 8층 평면도 (공사범위)

축척 : 1/200 (A3)

APPROVED BY

CHECKED BY

DRAWING BY

DATE 2022. 8

SCALE A1 :
A3 :

DRAWING TITLE

총무로 영상센터 지상 8층 평면도
(공사범위)

DRAWING NO

□ A - □ 0 0 1

SCALE

A3 : 1/200

SHEET NO

□ - □ 0 0 1

NOTE

- 천정: 천정 재설치(M바위 9.5T 석고보드 2PLY) / 신규 등기구(5인치 LED다운라이트) 설치설치.
바닥: 지정 데코타일 마감.
벽체: 신규벽체 설치 및 지정색상 도장/신규 도어 설치.

PROJECT TITLE

충무로 본관 8층 9층
공간조성공사

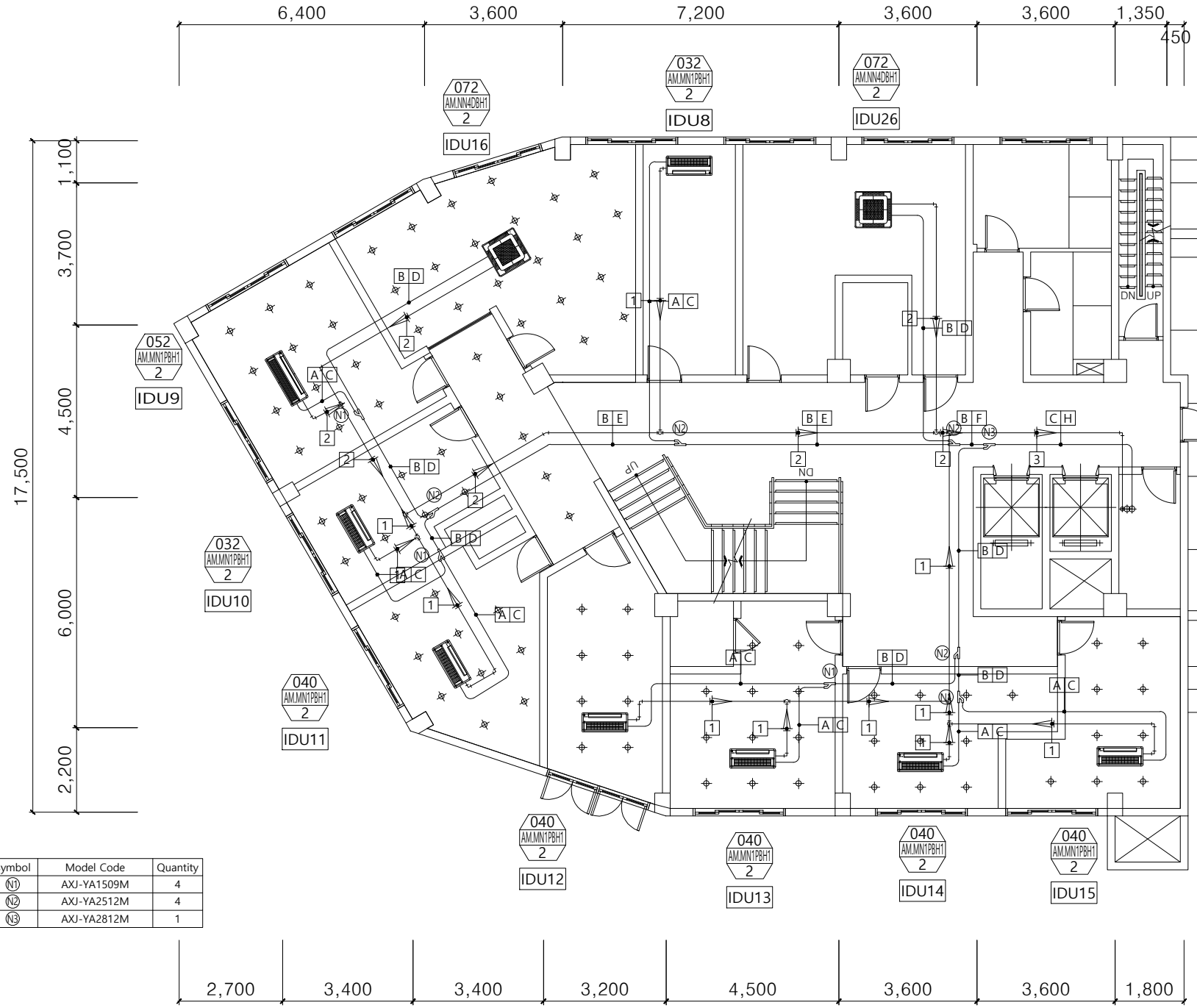
INTERIOR DESIGN

(주)다울에이앤씨
Daol Architecture & Construction Co., Ltd.

DAOL A&C / Keoseong Design
75, Ahasan-ro 78-gil, Gwangjin-gu, Seoul,
Republic of Korea
t +82 02 472 0337
f +82 02 483 6033
www.keoseong.co.kr

KEY PLAN

NOTE



| Symbol | Refrigerant Pipe Dia | Symbol | Drain Pipe Dia | Symbol | Model Code | Quantity |
|--------|----------------------|--------|----------------|--------|-------------|----------|
| A | ø6.35 | 1 | ø20 | N1 | AXJ-YA1509M | 4 |
| B | ø9.52 | 2 | ø25 | N2 | AXJ-YA2512M | 4 |
| C | ø12.70 | 3 | ø30 | N3 | AXJ-YA2812M | 1 |
| D | ø15.88 | | | | | |
| E | ø19.05 | | | | | |
| F | ø22.22 | | | | | |
| H | ø28.58 | | | | | |

| Legend | | | |
|--------|--------------------|-------------|------|
| Sym | Name | Type | Note |
| RG | Low Pressure Pipe | Copper Pipe | |
| RL | Refrigerant Pipe | Copper Pipe | |
| RHG | High Pressure Pipe | Copper Pipe | |
| D | Drain Pipe | PVC Pipe | |

APPROVED BY

CHECKED BY

DRAWING BY

DATE 2022. 8

SCALE A1 :
A3 :

DRAWING TITLE

지상 9층 천정도

DRAWING NO

00 - 0012

SHEET NO

00 - 0012

지상9층 천정도

(SCALE 1/150)

*모든마감은 시공전 발주자 협의 후 시공.

SCALE
A3 : 1/150

